

# West -Wide Governance Pathways Initiative

Monthly Stakeholder Meeting  
April 24, 2026



West-Wide Governance Pathways Initiative

# Agenda

- ROWE Board Selection Process
- ROWE Implementation Work and Time line
- Workstream Updates
  - Funding
  - Office of Public Participation
  - Stakeholder Process
  - Regulatory Structure
  - Market Oversight

# ROWE Board Selection Process

## Phase 1 (spring): Role specifications

- Lyceum has developed a Role Specification for ROWE 2026 Board of Directors with input from the Nominating Committee
- This includes expectations for prospective board members and experiential categories for the five seats.

## Experiential Categories

- Regulatory, Legal, and Adjudicative Governance
- System Operations Leadership
- Wholesale Energy Market Experience
- Multi -Jurisdictional Executive Leadership in the Electric Sector
- Financial and Institutional Stewardship in Complex Energy Organizations
- End-Use Consumer and Customer Experience

# ROWE Board Selection Process (cont.)

## Phase 2 (now -summer): Board member search

- Lyceum posted the role and is actively recruiting candidates and accepting nominations.
- Anticipate seating initial ROWE Board in early fall 2026.

## CANDIDATE SUBMISSION INSTRUCTIONS

If you are interested in this opportunity and you have not otherwise expressed your interest to Lyceum Leadership Consulting, please submit your CV/Resume and Cover Letter/Letter of Interest to [Donna.Frakes@LeadershipLyceum.com](mailto:Donna.Frakes@LeadershipLyceum.com) and reference “ROWE 2026 Board of Directors” in the subject line. Qualified applicants only please.

Stakeholders need to select and join a sector if they have not already  
done so to participate in Board selection process

# Nominating Committee Representatives

<b>EDAM Entities</b>	John Mayhew, PNM
<b>WEIM Entities</b>	Josh Walter, Seattle City Light
<b>ISO PTOs</b>	Meg McNaul, Six Cities
<b>Non-IOU load serving entities serving load from WEIM or EDAM</b>	Beth Vaughan, Cal CCA
<b>PIOs</b>	Kelsie Gomanie, NRDC
<b>IPPs, independent transmission developers, and marketers</b>	Ian White, Shell
<b>Consumer Advocates</b>	Julie Halligan, California Public Advocate's Office
<b>Large C&amp;I Customers</b>	Sam Harper, CLECA
<b>Distributed Energy Resources</b>	Collin Smith, LEAP
<b>BOSR</b>	Commissioner John Hammond, Idaho
<b>Formation Board (non -voting)</b>	Jim Shetler, BANC

# ROWE Board Briefing Book - Outline

## I. Background

## II. Corporate Organization and Governance

- a. Corporate Docs
- b. Policies
- c. Board Governance
- d. Principle Place of Business

## III. Regulatory Structure and Oversight

- a. Scope of FERC Regulation
- b. Tariff
- c. ROWE-CAISO Agreement
- d. Market Oversight

## IV. Finance

- a. Global Impact support
- b. Debt Financing
- c. 2027 -2028 Draft Budgets
- d. ROWE Budget Process
- e. Cost Recovery Mechanism

## V. Staffing and External Resources

- a. ROWE Staff
- b. Consulting and Legal
- c. Stakeholder/Volunteer Support
- d. CAISO Support

## VI. Communications and Outreach

- a. Public Affairs
- b. Office of Public Participation
- c. External Coordination (CAO, BOSR, Tribal Engagement)

## VII. Stakeholder Process

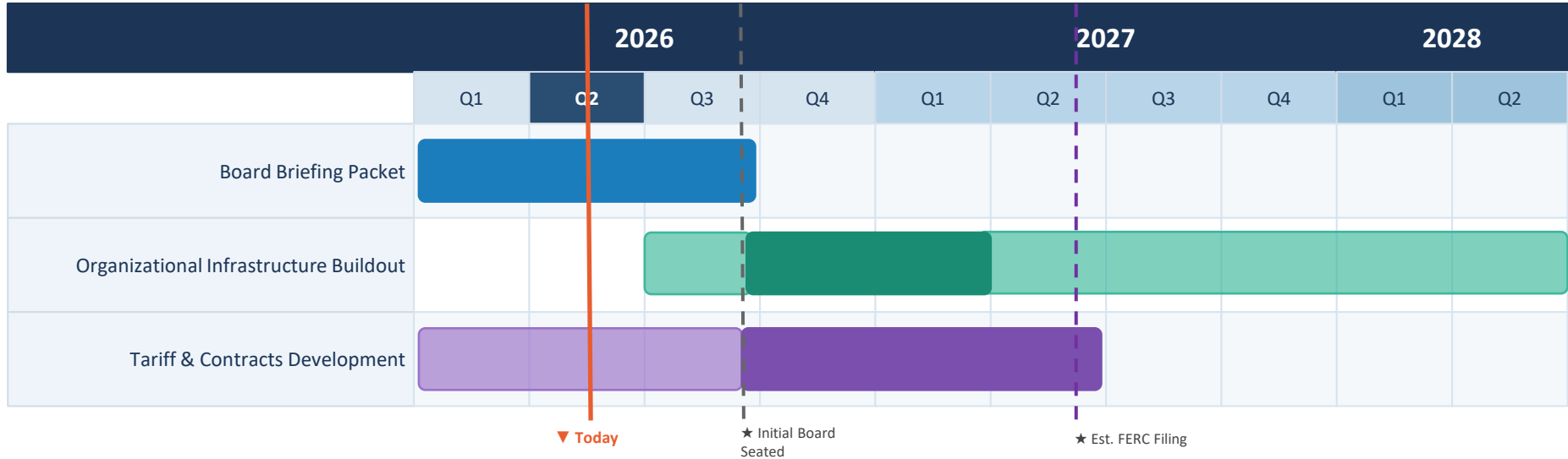
- a. Transitional Process
- b. Final Process

## VIII. RA Program

## IX. ROWE Evolution

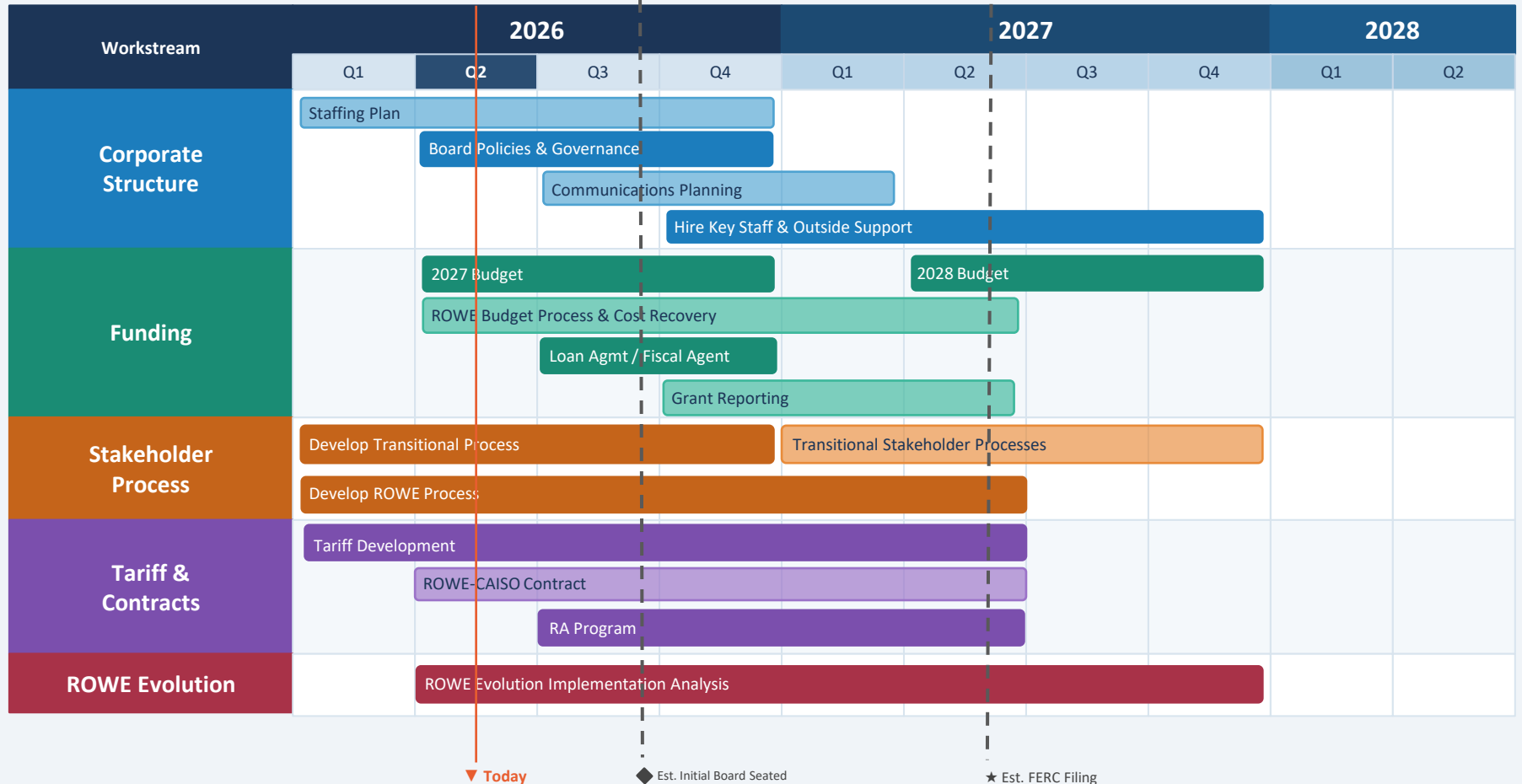


# ROWE Implementation Roadmap



# ROWE Implementation Swimlanes

Parallel workstreams · Q1 2026 – Q2 2028



# ROWE Milestone Deadline Tracker

Key deliverables by deadline cluster

Q3 2026 Near-term	Q4 2026 End of Year	Q1–Q2 2027 Mid-Year	Q4 2027 End of Year
<p>Corporate Structure</p> <p>Seat Initial Board</p>	<p>Corporate Structure</p> <p>2027 Staffing Plan</p>	<p>Corporate Structure</p> <p>Website &amp; Branding (Q1)</p>	<p>Corporate Structure</p> <p>Key Staff &amp; Contractors Hired</p>
<p>Corporate Structure</p> <p>Deliver Board Briefing Packet</p>	<p>Corporate Structure</p> <p>Begin hiring per plan</p>	<p>Corporate Structure</p> <p>Adopt 2027 Tribal Engagement Plan (Q1)</p>	<p>Corporate Structure</p> <p>Adopt 2028 Tribal Engagement Plan</p>
	<p>Corporate Structure</p> <p>Adopt Board Policies &amp; Governance</p>	<p>Funding</p> <p>Grant Reporting (Q2)</p>	<p>Funding</p> <p>Adopt 2028 Budget</p>
	<p>Corporate Structure</p> <p>Finalize CAISO interim support contract</p>	<p>Funding</p> <p>Finalize ROWE Budget Process &amp; Cost Recovery (Q2)</p>	<p>Stakeholder Process</p> <p>Transition RIF to SRC</p>
	<p>Funding</p> <p>Adopt 2027 Budget</p>	<p>Stakeholder Process</p> <p>Finalize ROWE Process (Q2)</p>	<p>Tariff &amp; Contracts</p> <p>FERC Approval</p>
	<p>Funding</p> <p>Execute Loan Agreement</p>	<p>Tariff &amp; Contracts</p> <p>File Tariff (Q2)</p>	
	<p>Funding</p> <p>Execute Fiscal Agent Agreement</p>	<p>Tariff &amp; Contracts</p> <p>Finalize CAISO-ROWE Contract (Q2)</p>	
	<p>Stakeholder Process</p> <p>Finalize Transitional Stakeholder Process</p>	<p>Tariff &amp; Contracts</p> <p>Finalize RA Program Tariff (Q2)</p>	
	<p>ROWE Evolution</p> <p>Begin ROWE Evolution Analysis</p>		

★ Communications & Key Opportunities: Ongoing throughout

# Work Group Updates



# Funding Update

*Seeking funding for ROWE start -up costs of \$~8 -9 million using the following options:*

- Stakeholder contributions
  - Phase III Pledge Form:  
<https://www.westernenergyboard.org/wp-content/uploads/WWGPI-Phases-III-Pledge-Form.pdf>
- Grants
- Debt financing

**Working on** : ROWE Budget process, cost recovery, and draft 2027 budget.

# Debt -financing for start -up costs

- CAISO Stakeholder Initiative for ROWE Start -up funding
  - The WEM GB and CAISO BoG will be taking up this topic at their meetings next week (April 28, 29)
- Proposal
  - Loan or line of credit with commercial bank
  - CAISO serves as guarantor
  - Repayment by ROWE in 2028

# Office of Public Participation - Scope of Work

**Purpose:** The Office of Public Participation (OPP) is an internal office of the Regional Organization for Western Energy (ROWE) tasked by the Board of Directors with addressing barriers to participation for individuals, entities, and non-governmental interest groups in regional market issues and governance by providing accessible, reliable, and neutral explanations of ROWE processes and issues.

**Scope:** The OPP's work product will complement the detailed technical and policy work available and performed by other staff. The OPP will not be responsible for or affiliated with any ROWE decision making and will focus its efforts on providing neutral information about ROWE processes and topics.

**Comments are due on May 8.**

# Workstream Updates Cont.

- **Stakeholder Process**
  - Building a detailed process map of the stakeholder process for each initiative classification.
  - Develop transitional process recommendation for initial board
- **Tribal Engagement (NEW)**
  - Beginning engagement with Tribal representatives to develop a proposal for the ROWE Board.

# Workstream Updates Cont.

- **Market Oversight (NEW)**
  - Developing proposals related to DMM, DMM Oversight Committee, MSC, and Market Expert based on recommendations in Final Proposal.
- **Regulatory Structure (NEW)**
  - Developing ideas and proposals about the ROWE's relationship with FERC and the CAISO; working closely with CAISO to evaluate ideas to meet the intent of the Final Proposal.

# Upcoming Opportunities for Engagement

- Next monthly stakeholder meeting will be held
  - Friday, May 29, 2026
  - 10:30 - 12:00PT/11:30 - 1:00MT/12:30 - 2:00CT
- Comments on the OPP Scope of Work are due on May 8

# Resources

- Launch Committee materials will continue to be posted on the WIEB landing page: <https://www.westernenergyboard.org/wwgpi/>.
  - This includes: stakeholder meetings and materials, working group materials, information on the nominating committee process, and comments.
- All ROWE related materials will be posted on the ROWE landing page: [rowesternenergy.org](http://rowesternenergy.org).
  - This includes: Formation Board meetings and materials and the emerging resource adequacy framework.



# Thank you!

- The Launch Committee can continue to be reached via [pathways@westwidepathwaysinitiative.org](mailto:pathways@westwidepathwaysinitiative.org)
- All comments can be directed to [comments@westwidepathwaysinitiative.org](mailto:comments@westwidepathwaysinitiative.org)
- Pathways Initiative information continues to be hosted on the WIEB website at [www.westernenergyboard.org/wwgpi](http://www.westernenergyboard.org/wwgpi)