

# Committee of State Representatives

April 24, 2026

# Agenda

---

1. Chair's Welcome and Roll Call – Chris Parker, COSR Chair
2. EDAM RA Update – Robin Arnold, WIEB
3. WRAP Updates – Elliott Nethercutt, WIEB
  - a. Membership
  - b. BPA Transmission NTFP (*Rescinded*)
  - c. COSR Comments on PRM Proposal & 2026 Draft PRC Workplan (*Submitted*)
  - d. COSR Leadership Comments on WPP Ops Testing Timeline & Load Forecast Data NTFP (*Submitted*)
4. ELCC+QCC TF Update & Next Steps – Elliott Nethercutt, WIEB
5. Upcoming Meetings & Important Dates – Elliott Nethercutt, WIEB
6. Review of Recent Western Resource Adequacy Analyses
  - a. Introduction – Brian Rybarik, COSR Vice Chair
  - b. Extended Q&A for E3's PNW RA Phase II Study – Arne Olsen, E3
7. Adjourn

\* There are **No** action items for this meeting.

# 1. Chair's Welcome & Roll Call

## 2. EDAM RA Update

## 3. WRAP Updates

# WRAP Updates

## Proposals & Summary of COSR Comments

| WRAP Effort / Proposal   | Status  | Summary of COSR Comments  |
|--|---|---|
| <a href="#"><u>BPA Transmission Non-Task Force Proposal (NTFP)</u></a>                             | Withdrawn; BPA to explore alternative avenues       | <ul style="list-style-type: none"> <li>Potential COSR comments were initially discussed at the <a href="#"><u>January monthly meeting</u></a>; following several months of deliberation, BPA withdrew this NTFP on April 15.</li> </ul>   |
| <a href="#"><u>2026 Draft PRC Workplan</u></a>   | COSR comments approved March 27; submitted April 15 | <ul style="list-style-type: none"> <li>Supports prioritization: addressing large loads and initiating regional transmission whitepaper in 2026</li> <li>Recognizes streamlining / utilizing alternative pathways</li> <li>Requests updates on DAM Optimization &amp; Deficiency Deferral</li> </ul>   |
| <a href="#"><u>Planning Reserve Margin (PRM) TF Proposal</u></a>                                   | COSR Comments: approved April 8; submitted April 9  | <ul style="list-style-type: none"> <li>Recognizes tradeoff between 3/5-year advanced commitment vs. flexibility; requests additional background info for 10% “load trigger”</li> <li>Encourages continued efforts on seasonal windows for 2 subregions that experience wide range of weather</li> <li>Agrees with load forecasting (consistency for both seasons) and approach for RSG with the retirement of BAL-002-WECC-3</li> <li>Includes dissenting comments from New Mexico</li> </ul> |
| <a href="#"><u>2026-NTFP-02: WPP Operations Testing Timeline &amp; Load Forecast Data NTFP</u></a> | COSR Leadership Comments submitted April 21         | <ul style="list-style-type: none"> <li>Recognizes BPM updates are not significant policy changes</li> <li>Acknowledges potential benefits of extending Ops Test through the end of the Cure Period (additional 60 days)</li> <li>Supports added clarity on Load Forecasting data alignment between the FS and Ops Program</li> </ul>  |

## 4. ELCC+QCC TF Update & Next Steps

# ELCC+QCC TF Update & Next Steps

---

## WRAP's ELCC + QCC Task Force Objectives

1. Develop QCC approach for new long-duration storage resources
  2. Review and update ELCC methodology with the following goals:
    - Balance stability, predictability, and accuracy
    - Determine whether average ELCC framework captures reliability value of new resources
    - Consider FERC precedent (Docket ER21-278-001)
- 

*How can COSR engage on this effort before the TF proposal is out for comment?*

- WIEB Staff to develop an overview of approaches for each state (state ELCC portfolios)
- COSR members and/or staff to provide review prior to May 22 monthly meeting

# ELCC+QCC TF Update & Next Steps

## State ELCC Portfolios

| State         | Approach / Application   | Methodology Description  |
|---------------|--|--|
| <b>Oregon</b> | <ul style="list-style-type: none"><li>• ELCC is specified in Commission’s May 2024 RA Framework (Order 24-133, Docket AR 660 / UM 2143)</li><li>• Practices initially originated in Docket UM 2011 (2019), which established ELCC “best practices” for Oregon utilities</li><li>• Oregon utilities must demonstrate RA through their Integrated Resource Plans (IRPs)</li><li>• ELCC is commission-endorsd method for measuring the “qualified capacity contribution” of resources, especially wind, solar, storage, and demand-side resources</li></ul> | <ul style="list-style-type: none"><li>• Commission generally directs utilities to use incremental (marginal) ELCC for capacity analysis for all resources</li><li>• Average / portfolio-level capacity outcomes can still be used in IRPs, scenarios and system level analysis</li></ul> |

# 5. Upcoming Meetings & Important Dates

# Upcoming Meetings & Important Dates

---

**May 12-14:** Spring 2026 Joint CREPC-WIRAB Meeting (San Diego, CA)

**May 22:** COSR Monthly Meeting: *Review of ELCC State Profiles / ELCC+QF TF Updates*

**June 26:** COSR Monthly Meeting: *WRAP Participant Data Presentation*

# 6. Review of Recent Western Resource Adequacy Analyses

# Review of Recent Western Resource Adequacy Analyses

---

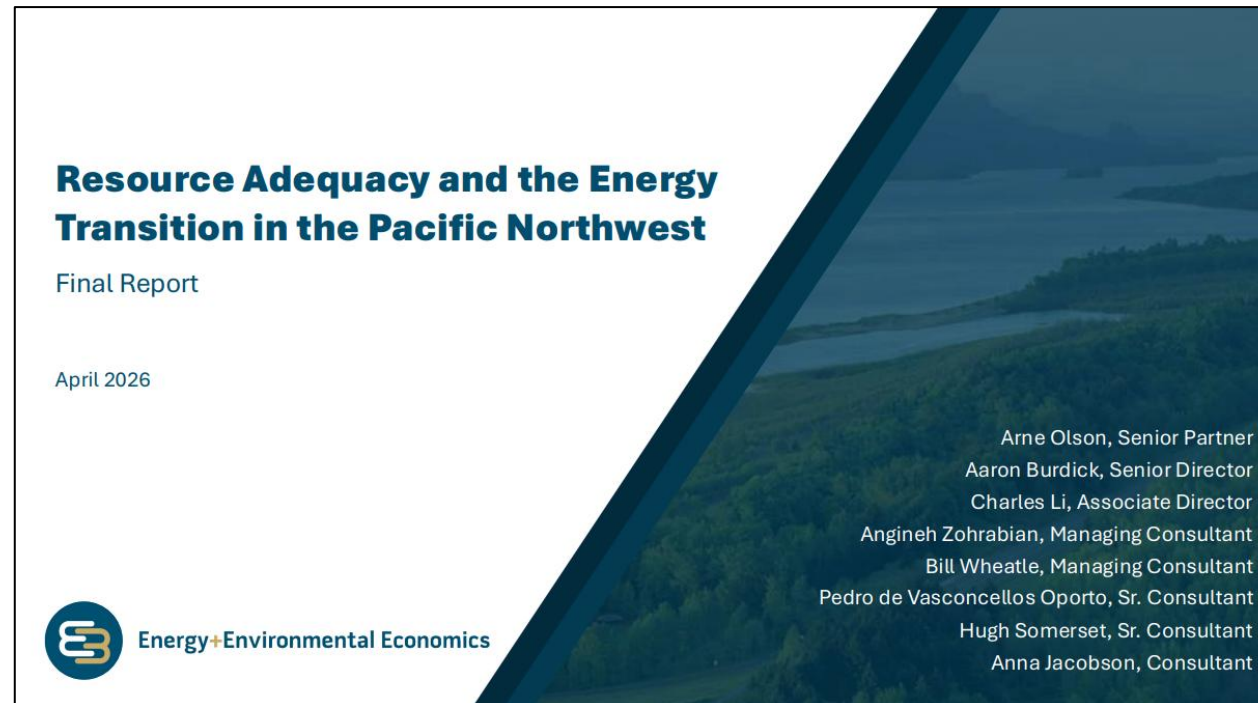
## Extended Q&A

Introduction – Brian Rybarik, COSR Vice Chair

Extended Q&A – Arne Olsen, E3

---

*Please raise your hand or enter your questions in the chat!*



# 7. Adjourn

# Appendix I: Summary of PRM TF Proposal

| Component                     | Change   |   |  |
|-------------------------------|--|---|--|
| <b>Modeling Timeline</b>      | <b>Sets advisory FSPRMs 5 years ahead of FS Deadline</b> <ul style="list-style-type: none"> <li>If a Subregion observes a 10% “load trigger” due to participant entry/exit,* a new study will be conducted with updated data; new FSPRMs presented to WPP Board 3 years ahead of FS Deadline</li> <li>If load trigger is not met, advisory FSPRMs presented to WPP Board 3 years ahead of FS Deadline</li> </ul> |   |  |
| <b>Binding Season</b>         | <b>Updated Seasonal Durations</b> <ul style="list-style-type: none"> <li>Summer: Jun 1 – Sep 15 (removes Mar 1-5)</li> <li>Winter: Nov 20 – Feb 28/29 (removes Nov 1-19)</li> </ul>  | <b>Updated Peak Months</b> <ul style="list-style-type: none"> <li>Summer Peak Months: Jun, Jul, Aug</li> <li>Winter Peak Months: Dec, Jan, Feb</li> </ul>   |  |
| <b>LOLE Study Methodology</b> | <b>Contingency Reserve Requirements</b> <ul style="list-style-type: none"> <li>With the anticipated retirement of BAL-002-WECC-3 Standard, create an NTFP to address alignment between WRAP LOLE model and changing Reserve Sharing Group (RSG) requirements</li> </ul>  | <b>Historical Weather Years (Clarification)</b> <ul style="list-style-type: none"> <li>Use a rolling 40 years of weather data for LOLE modeling (as opposed to continually adding years)</li> </ul> | <b>Peak P50 Load Values</b> <ul style="list-style-type: none"> <li>Apply Seasonal Peak Load approach for Summer (currently used for Winter)</li> </ul> |
| <b>Other</b>                  | Added language to clarify WRAP governance pathways for future policy changes   |   |  |

\*The average peak load for a single participant in each subregion ~10%.